

Government support for woodfuel

Matthew Woodcock

Operations Manager

Forestry Commission - South East England Conservancy

- Background & the Biomass Task Force
- Government's response to the BTF's recommendations
- The resource available & the wider benefits
- Barriers to industry development
- What's happening at the moment?

Background:

- Acceptance of climate change
- Need for alternatives to fossil fuels
- Underused resources

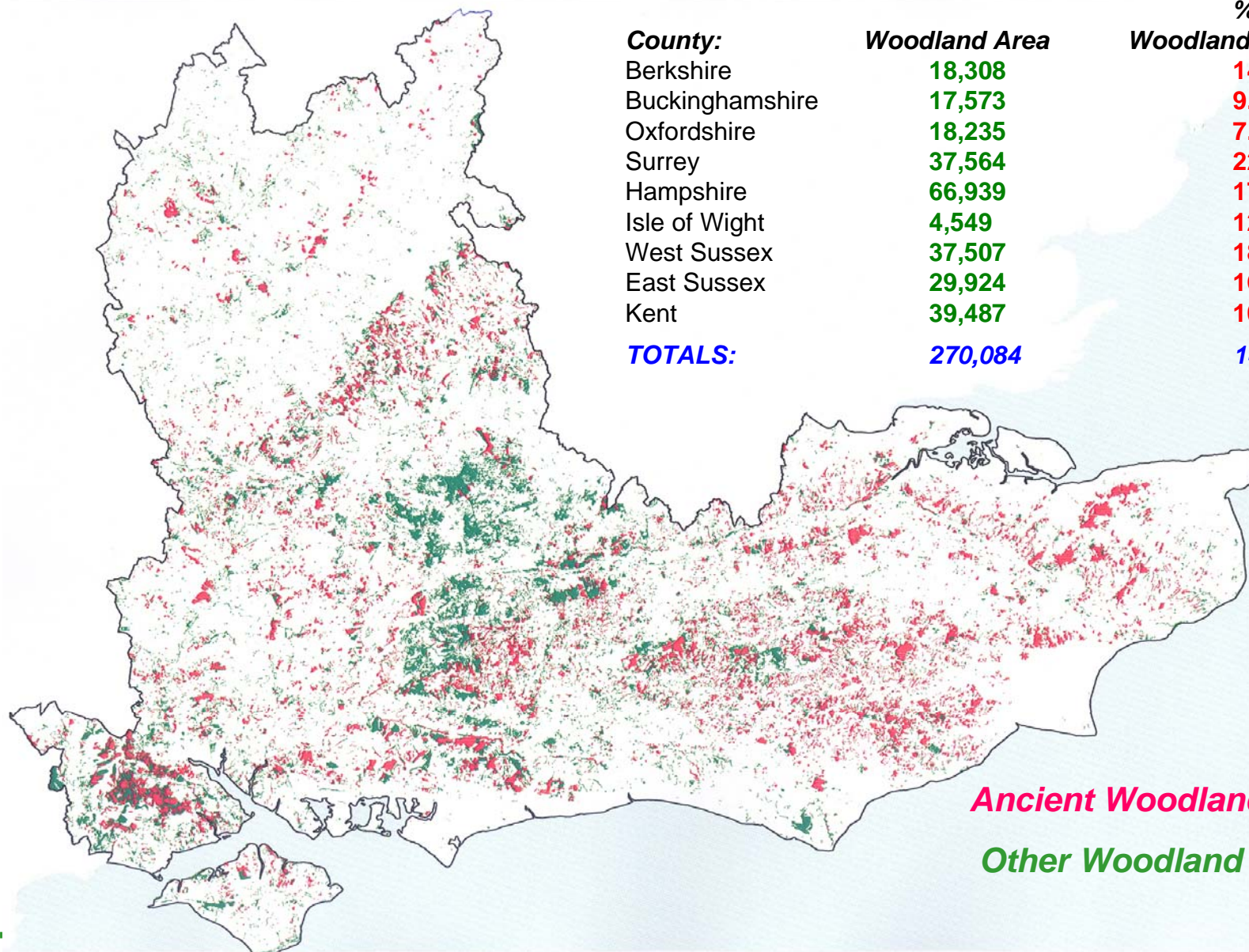
Biomass Task Force:

- Established Oct 2004 to ‘assist Government and the biomass industry in optimising the contribution of biomass energy to renewable energy targets and to sustainable farming and forestry and rural economy objectives’.
- Report published October 2005

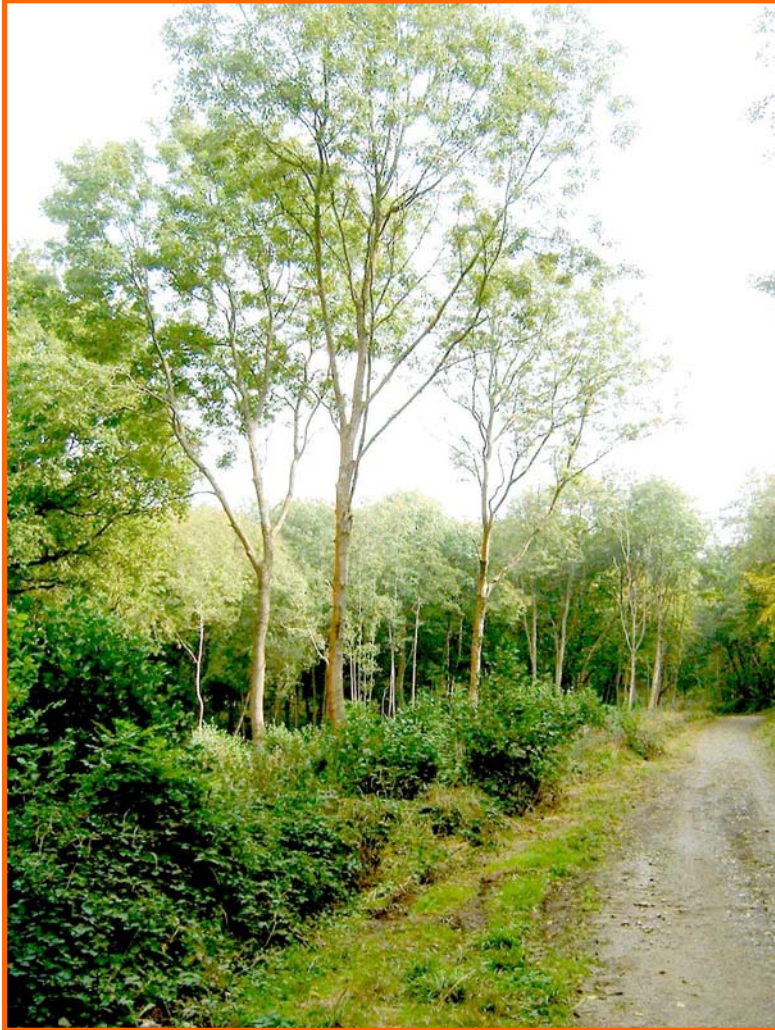
- **Incentives:**
 - **BioEnergy Capital Grants Scheme** (another £2M)
 - **Low Carbon Buildings Programme** - focused on homes, communities and schools (£80M over 3 years)
 - **Climate Change Programme Review** - a five year programme to support biomass boilers and CHP in the commercial, industrial and community sectors (£10-15M in first 2 yrs)
 - Examine longer term mechanisms for supporting renewable heat
 - **Building Regulations:** from April 2006 all new builds of > 1,000m² must have alternative sources of energy considered
 - **Electricity generation:** seek to simplify the regulations pertaining to co-firing and encourage the development of small scale generation.

- **Leading by example:**
 - Government is responsible for 30% of total new build spending
 - Wilton Park
 - SEEDA
- **Raising awareness and providing advice:**
 - Launch of the Biomass Energy Centre
 - Particular focus on schools
 - Improve networking
- **Planning:**
 - Many local authorities are following Merton in their LDF's.
- **Supply chain:**
 - Forestry Commission will lead in the preparation of a strategy and implementation plan to significantly increase the amount of biomass available through the supply chain

The Resource:



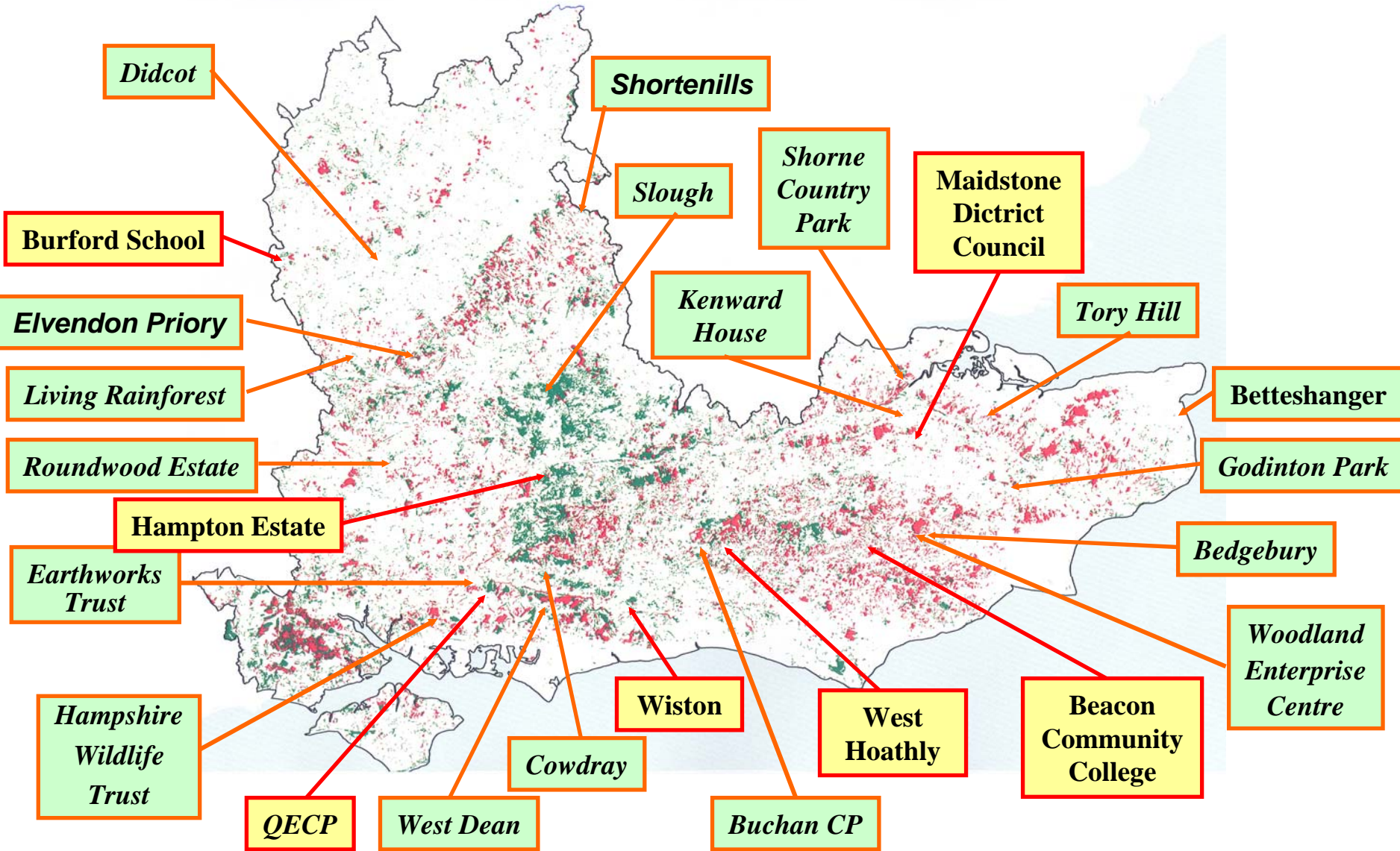
Other benefits of using wood:



- **Public perceptions:**
 - **Key influencers:** Developers, Infrastructure managers, Councillors, etc
 - Wider public: users, voters, schoolchildren, etc
 - Woodland owners/managers: traditional woodland owners, farmers, 'new' woodland owners
- **Market Development:**
 - Market segmentation:
 - **Installer/maintainer capacity**
 - **Facilitation**
 - **Incentives**
 - Direct grants
 - Indirect incentives (e.g. VAT rating)
 - Regulatory barriers:
 - Building Regulations
 - Planning
 - Definition of 'wood as waste' (EA)

- **Supply Chain development:**
 - **Standardisation**
 - Fuel:
 - Conventional logs
 - ‘Cordwood’ logs
 - Raw woodchips
 - ‘Refined woodchips’
 - Pellets
 - Installations: ‘Reference installations’ ?
 - Storage systems
 - Delivery systems
 - Basic guidance for potential users/site managers
 - Aggregation of supplies
 - Networking: Buyer - supplier
 - Harvesting/extraction machinery
 - Resource evaluation

What's happening at the moment?



- **Energy buyers:** looking for alternatives
- **Planners:** considering LDF policies
- **Foresters:** preparing to supply
- **Forestry Commission:**
 - preparing the woodfuel strategy
 - developing the Biomass Information Centre
- **SEEDA:** preparing report on supply chain
- **Installers:** 'running around like -----!'