

[Skip to content](#)



[Back to Graphics Mode](#) | [Accessibility](#) | [Help](#) | [Site Map](#) 

Search

- [Ashford is now just 37 minutes from London on the UK's first high speed rail line.](#)
- [Work Here](#)
- [Live Here](#)
- [Invest Here](#)
- [The Organisation](#)
- [Ashford - The Future](#)
- [News & Events](#)
  - [News Archive](#)
  - [What the Papers Say](#)
  - [On Track](#)
  - [Community Newsletter](#)
  - [Ashford Best Placed in Britain Photography Competition](#)
  - [Publications](#)
  - [Ashford Business Breakfast](#)
  - [Sir Terry Farrell's Design Vision for Ashford](#)

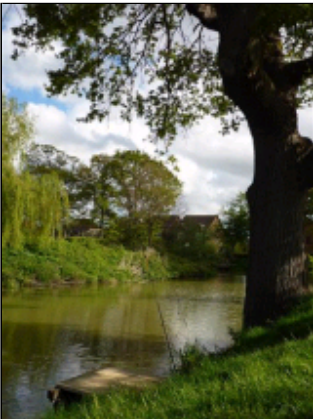
[Home](#) > [News & Events](#) > Ashford Best Placed in Britain Photography Competition

## Ashford Best Placed in Britain Photography Competition

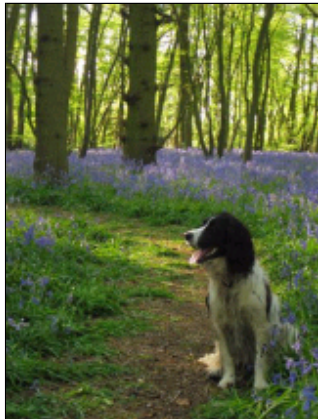
[The Winners](#) | [View Photo Entries](#) | [The 2009 Competition](#) | [FAQs](#)

### The 2010 Winners

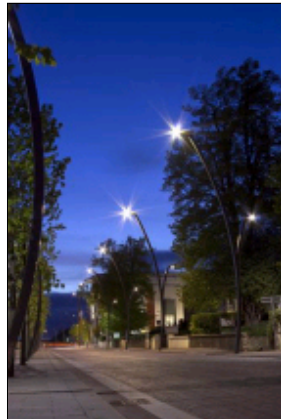
The winners of the Ashford Best Placed in Britain Photography Competition 2010 are:



Under 12:  
**Moat at Park Farm**  
by George Hinkley, 9  
from Park Farm



12 to 17:  
**Nature Blooming**  
by Jamie Bramley, 16  
from Park Farm



18 & Over:  
**Space**  
by Giacomo Marchesi, 21  
from Smeeth

A total of 70 people of all ages entered the competition, and a staggering 769 people voted for the winners online and at The Art Room gallery – so thank you for getting involved!

**Winners' exhibition!**  
**10th - 23rd June**  
**The Art Room, North Street, Ashford**

View or order copies of the winning photos and the judges' shortlist and longlist!  
**Special showing of ALL photos– Saturday 12th June!!**

The winning and shortlisted images will be displayed in the gallery, and the judges' longlist will be available to view in a photo folder. On Saturday 12th June, a widescreen TV in the gallery will show all entries submitted to the competition.

---

Copyright 2006 Ashford Borough Council

[Read our disclaimer here](#)

Ashford's Future, 7th Floor, Charter House, Park Street, Ashford, Kent TN24 8EQ

Tel: 01233 330812 Email: [thefuture@ashford.gov.uk](mailto:thefuture@ashford.gov.uk)

---